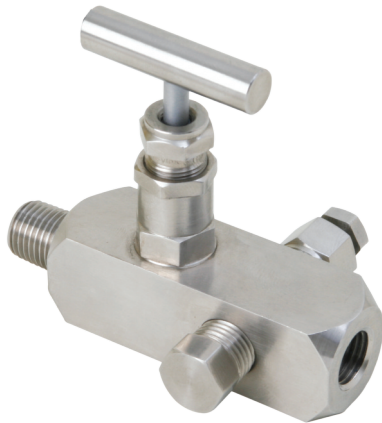


# MGT

Multi port valve (hard seat)



Type multiport gauge valves are ideal for use on gauge or instrument installations without further penetrations of the main piping. A gauge valve with multiple outlets and inlets with in various sizes and connections. The standard three 1/2" NPT female screwed outlet ports offer a flexibility of alternative applications. Available with a male inlet and three female outlet ports or female inlet and three female outlets. Bleed valves and plugs to suit outlet ports supplied optional.

### Applications

- Mounting of instruments or multiple gauges
- Instrument isolation
- Instrument installation with separate vents  
And calibrate connections
- Liquid and vapor gas service

### Technical specifications

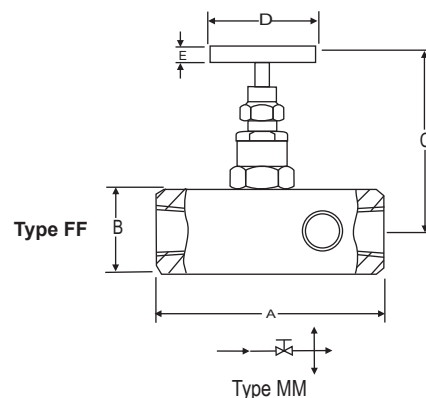
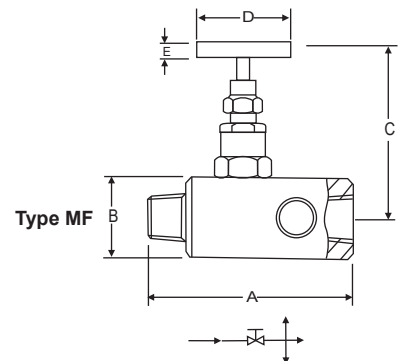
Design Pressure	: 6000 PSI
Max temp.	: 240°C
Stem	: (Type CT) Conical tip
Gland Packing	: PTFE
Stem packing area	: Burnished finish for smooth valve operation.
Safety Feature	: Back seating for preventing stem blowout.
Feature	: Multi outlet design extended valve inlet up to 4" max. for pipe insulation.

Size	Type	Body dimensions		Height (open) C	Handle D	Handle OD E
		A	B			
1/4"	FxF	74	25	65	40	10
	MxF	84	25	65	40	10
3/8"	FxF	74	25	65	40	10
	MxF	84	25	65	40	10
1/2"	FxF	102	32	86.6	55	12.7
	MxF	115	32	86.6	55	12.7
3/4"	FxF	102	38	86.6	55	12.7
	MxF	115	38	86.6	55	12.7

All dimensions are in mm

Optional : MGT 10 - High pressure valves for 10,000 psi pressure

Note : Other combination sizes available on request.  
Please contact us for more details.



- Notes :
- Drawings are not to scale.
  - All Dimensions are in mm.

**How To Order**

Body Material	Stem Packing	Size = P x P1	Connections (inlet x outlet)	Threads
C = Carbon Steel	P = PTFE	24 = 1/4" x 1/4"	FF = Female x Female	N = NPT (ANSI B 1.20.1)
S = SS 316	G = Grafoil	44 = 1/2" x 1/2"	MF = Male x Female	P = BSPP (BS 2779, ISO 228/1)
S4 = SS 304		46 = 1/2" x 3/4"	SW = Socket Weld	B = BSPT (BS 21, ISO 7/1)
SL = SS 316L		64 = 3/4" x 1/2"	FL = Female x extended	
M4 = Monel 400		66 = 3/4" x 3/4"	long body end	
M5 = Monel 500				
H = Hastelloy C				
B = Brass				

**Options**

**TF** : Compliance to NACE standard  
**SG** : For Oxygen service, valves are supplied cleaned, degreased and suitably packed.  
**GH** : Material test certificate\*  
**GO** : Hydro test certificate  
**BLD8** : Bleeder 1/2" NPT (Male)  
**D8** : Plug 1/2" NPT (Male)

\* Material test certificate will be provided for wetted parts only with chemical composition testing. For others, please consult factory.

**Example**

To place an order simply refer to the codes in the table.

Valve Type .Body Material + Stem Packing + Size + Connections + Threads + Options

MGT + S + P + 44 + MF + N = MGT . S . P . 44 . MF . N . Options

**Standard Valve Materials**

Body		Bonnet	Stem	Tip
Carbon Steel	CS A105	CS A105	SS 304	SS 304
Stainless Steel	SS 316	SS 316	SS 316	SS 316
Monel	Monel	Monel	Monel	Monel

Note : Specifications and dimensions given in this product catalogue represents the state of engineering at the time of printing .  
 Modifications may take place and materials specified may be replaced by others without prior notice.